

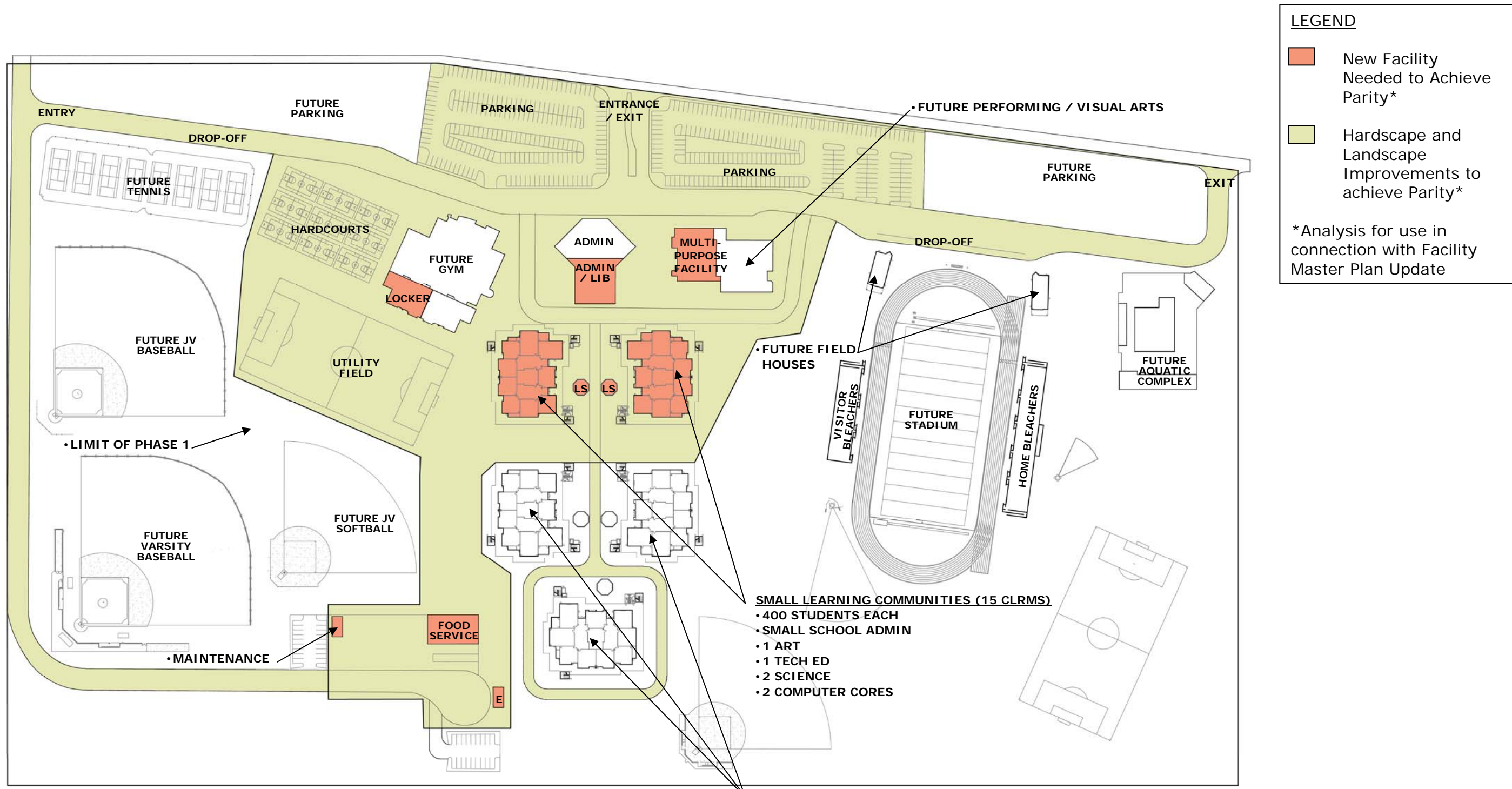


New High School - Alpine/Blossom Valley Area

Proposition U Project List

- Complete site development including utilities and road extensions
- Complete construction—classrooms and general use school buildings and grounds to accommodate up to 800 students, adequate academic/vocational/job-training equipment, library/multimedia facilities, computer and science labs, food service facilities, and space for student-support services
- Site Discretionary Funds. Each existing comprehensive high school, and Chaparral High School, will be allocated \$150 per student (based upon fiscal year 2009-10 enrollment) of bond proceeds (as “site discretionary funds”) to be spent on qualified, permitted projects.

FACILITY NEEDS ASSESSMENT – CONCEPTUAL BUILD OUT PLAN



SMALL LEARNING COMMUNITIES (15 CLRMS)
 • 400 STUDENTS EACH
 • SMALL SCHOOL ADMIN
 • 1 ART
 • 1 TECH ED
 • 2 SCIENCE
 • 2 COMPUTER CORES

FUTURE SMALL LEARNING COMMUNITIES (15 CLRMS)
 • 400 STUDENTS EACH
 • SMALL SCHOOL ADMIN
 • 1 ART
 • 1 TECH ED
 • 2 SCIENCE
 • 2 COMPUTER CORES



High School 12 (Conceptual Only) – For Estimating Purposes

"Parity" Study (Phase 1)



June 20, 2008



**NEW 12th HIGH SCHOOL
FACILITY NEEDS ASSESSMENT
Assumptions Associated with Facility Master Plan Update
(Work as of June 20, 2008)**

Planner: D. Johnson

LONG RANGE FACILITIES MASTER PLAN (REV. 1)					PROP H FUNDED		REV. 1 COST UPDATE		
Phase	Bldg. #	Scope	# of Classrooms	In SF unless noted	Prop H Completed/In Progress/Planned (Phases 1 - 3B-R) @ May 2008	Planned via Prop H Extended Funding (if approved)	In Prop H Bond Language (Not Complete)	Modernize Needs Beyond Prop H	Projections to Achieve Parity
2B		BACKBONE INFRASTRUCTURE			X				
2B		EIR STUDY ON 3 SITES			X				
2B		LAND ACQUISITION			X				
3A		NA							
3BR		NA							
		<u>PHASE I</u>							
		2 - NEW 400 STUDENT SMALL LEARNING COMMUNITIES					X		
		SITE IMPROVEMENTS/UTILITIES		13 AC			X		
		GRADING/FILL		300,000 CY			X		
		ENTRIES - 3 @ 30' WIDE		2,700			X		
		FIRE LANE/SERVICE ROAD/DROP-OFF		5.9 AC			X		
	1.2	2 - 400 STUDENT CLASSROOM BUILDINGS W/ 2 ADMIN, SCIENCE, ART, COMPUTER LAB STUDENT TOILETS (IN EA BLDG)	30	32,000 1,200			X X		
	3	PHASE ONE ADMINISTRATION BUILDING W/ LIBRARY & MEDIA	2	PHASE ONE @7500 SF			X		
	4	MULTI PURPOSE BUILDING W/ 1 COURT/STAGE/MUSIC/BAND COMBO	2	6,400 SF			X		
	5	SHOWER/LOCKER ROOM (B/G)		9,500			X		
	6	FOOD SERVICE		4000 SF			X		
		STUDENT QUAD		39000 SF			X		
		LUNCH SHELTERS		1500 SF			X		
		HARDCOUTS		40000 SF			X		
		PE FIELDS		3.5 AC			X		
		PARKING		3.6 AC			X		
		LANDSCAPE AND HARDSCAPE		3.5 AC			X		
		STABILIZATION OF REMAINDER OF CAMPUS		50 AC			X		
		<u>PHASE II</u>							X
		SITE AND EXTENSION OF UTILITIES		29 AC					X



**NEW 12th HIGH SCHOOL
FACILITY NEEDS ASSESSMENT
Assumptions Associated with Facility Master Plan Update
(Work as of June 20, 2008)**

Planner: D. Johnson

Phase	Bldg. #	Scope	# of Classrooms	In SF unless notes	Prop H Completed/In Progress/Planned (Phases 1 - 3B-R) @ May 2008	Planned via Prop H Extended Funding (if approved)	In Prop H Bond Language (Not Complete)	Modernize Needs Beyond Prop H	Projections to Achieve Parity
		2 - 400 STUDENT CLASSROOM BUILDINGS W/ 2 ADMIN, SCIENCE, ART, COMPUTER LAB	30	32,000					X
		1 - 400 STUDENT CAPACITY TECH ED	10	28,000					X
		STUDENT TOILETS IN EA BUILDING		1,800					X
	3	PHASE TWO ADMINISTRATION BUILDING W/ LIBRARY & MEDIA	2	PHASE TWO @7500 SF					X
		MULTI-PURPOSE/MUSIC/BAND/VISUAL ARTS	1	9,600					X
		GYMNASIUM		23,000					X
		TENNIS COURTS		38,000					X
		VARSITY/JV BASEBALL/SOFTBALL		13 AC					X
		BASEBALL/SOFTBALL TOILET ROOMS		3,000					X
		<u>FOOTBALL STADIUM</u>							X
		Rubberized Track		52,000					X
		Grass Field		102,000					X
		Field Building - toilets, concessions & team		6,000					X
		Ticketing and Entrance		400 SF					X
		<u>POOL</u>							X
		25m x 25yd pool/Deck							X
		Pool Building		2,000					X
		Toilet Rooms/shower/utilities for concessions		5,000					X